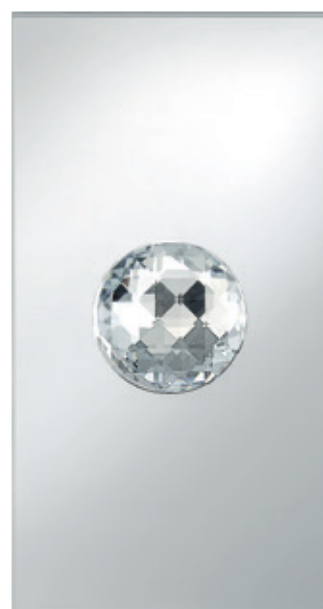
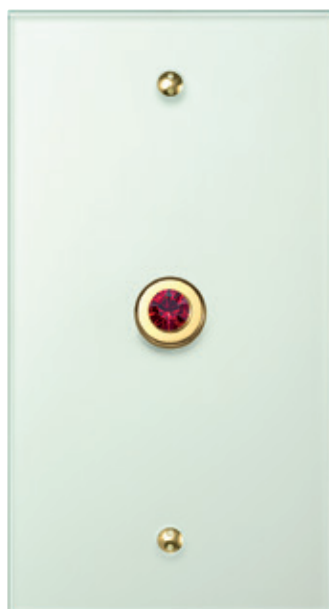


# Berker TS/TS Crystal/ TS Crystal Ball

Behind its elegantly purist exterior, there is an unexpected wealth of technical options: the Berker TS allows operation, not only of multiple light sources, but, if so desired, also of intelligent building control systems. With their fine platform and switching knobs MADE WITH SWAROVSKI ELEMENTS, the Berker TS Crystal lends refinement to any atmosphere.

- Suitable for installation bus systems and relay circuits with safety extra-low voltage
- Material glass
- Crystalline variation of push-buttons MADE WITH SWAROVSKI ELEMENTS for the glass platform of the Berker TS
- Push-buttons available in 4 colours



Cover plates 28

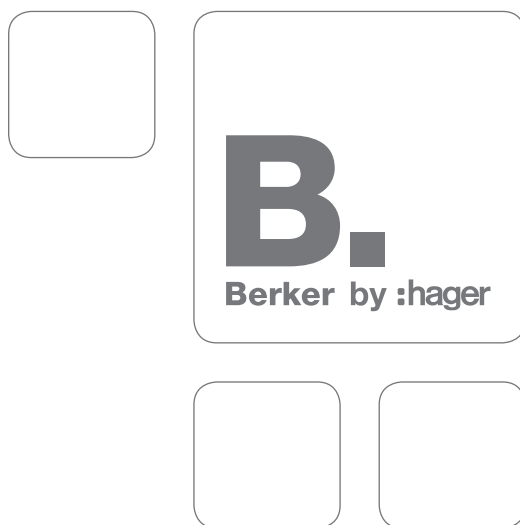
---

Berker TS Crystal Ball 30

---

Supplementary products 30

---



## Cover plates



### Glass cover plate

Dimensions (W x H x D) 86 x 160 x 5 mm  
Screw length 25 mm

Other components from the B.7 glass range are available, e.g. socket outlets. Observe scale drawings!

- glass with polar white imprint on the backside
- with polar white plastic base
- each with 2 3.5 x 25 mm two-hole screws in chrome, gold and stainless steel for dismantling protection
- with screwdriver
- for vertical and horizontal mounting

Suitable for	Order no.	Page
Berker TS Crystal		29
Push-button, NO contact	1811 1 ..	28
Wall box	1809	31
Wall box for installation in hollow walls	1824	31
<b>optional</b>		
Two-hole screws 2 x M3.5 x 50 mm	1895 1 ..	31

Design	Order no.	PU
clear glossy, 1gang	<b>1391</b>	1
clear glossy, 2gang	<b>1392</b>	1
clear glossy, 4gang	<b>1394</b>	1



### Glass cover plate with facet

Dimensions (W x H x D) 86 x 160 x 5 mm  
Screw length 25 mm

- with all-round facet
- with polar white plastic base
- each with 2 3.5 x 25 mm two-hole screws in chrome, gold and stainless steel for dismantling protection
- with screwdriver
- for vertical and horizontal mounting

Suitable for	Order no.	Page
Berker TS Crystal		29
Push-button, NO contact	1811 1 ..	28
Wall box	1809	31
Wall box for installation in hollow walls	1824	31
<b>optional</b>		
Two-hole screws 2 x M3.5 x 50 mm	1895 1 ..	31

Design	Order no.	PU
clear glossy, 1gang	<b>1311</b>	1
clear glossy, 2gang	<b>1321</b>	1
clear glossy, 4gang	<b>1341</b>	1
clear glossy, 6gang	<b>1366</b>	1
clear glossy, 8gang	<b>1388</b>	1



### Push-button, NO contact

Rated voltage 24 V  
Momentary-contact current 1.5 A  
Operating temperature -20 ... +60 °C  
Insertion depth 13 mm

- brass, refined
- with plug-in terminals

Suitable for optional	Order no.	Page
System interfaces		30

For connection via system interfaces to KNX radio or KNX installations.

Alternatively, can be used to control relay circuits.

Only suitable for safety low voltages!

Design	Order no.	PU
chrome glossy, brass galvanised	<b>1811 10</b>	10
gold glossy, 24-carat galvanised	<b>1811 12</b>	10
stainless steel matt, brushed nickel	<b>1811 13</b>	10

## Berker TS Crystal



### Push-button Crystal

Rated voltage	24 V	- NO contact
Momentary-contact current	1.5 A	- brass, refined
Operating temperature	-20 ... +60 °C	- with SWAROWSKI ELEMENTS
Insertion depth	13 mm	- with plug-in terminals

For connection via system interfaces to KNX radio or KNX installations.

**Suitable for optional**  
System interfaces

**Order no.**

**Page**

Alternatively, can be used to control relay circuits.

Only suitable for safety low voltages!

Design	Order no.	PU
chrome glossy	<b>1964 00 01</b>	1



### Push-button Black Diamond

Rated voltage	24 V	- NO contact
Momentary-contact current	1.5 A	- brass, refined
Operating temperature	-20 ... +60 °C	- with SWAROWSKI ELEMENTS
Insertion depth	13 mm	- with plug-in terminals

For connection via system interfaces to KNX radio or KNX installations.

**Suitable for optional**  
System interfaces

**Order no.**

**Page**

Alternatively, can be used to control relay circuits.

Only suitable for safety low voltages!

Design	Order no.	PU
stainless steel matt	<b>1966 02 15</b>	1



### Push-button Siam

Rated voltage	24 V	- NO contact
Momentary-contact current	1.5 A	- brass, refined
Operating temperature	-20 ... +60 °C	- with SWAROWSKI ELEMENTS
Insertion depth	13 mm	- with plug-in terminals

For connection via system interfaces to KNX radio or KNX installations.

**Suitable for optional**  
System interfaces

**Order no.**

**Page**

Alternatively, can be used to control relay circuits.

Only suitable for safety low voltages!

Design	Order no.	PU
gold glossy	<b>1965 02 08</b>	1



### Push-button Topaz

Rated voltage	24 V	- NO contact
Momentary-contact current	1.5 A	- brass, refined
Operating temperature	-20 ... +60 °C	- with SWAROWSKI ELEMENTS
Insertion depth	13 mm	- with plug-in terminals

For connection via system interfaces to KNX radio or KNX installations.

**Suitable for optional**  
System interfaces

**Order no.**

**Page**

Alternatively, can be used to control relay circuits.

Only suitable for safety low voltages!

Design	Order no.	PU
gold glossy	<b>1965 02 03</b>	1



## Berker TS Crystal Ball



### Crystal Ball

Operating voltage	8 ... 30 V=	- operation by gently touching the Crystal Ball
Current consumption (operation)	≈ 18.3 mA	- with SWAROWSKI ELEMENTS
Current consumption (idle)	≈ 4.3 mA	- with adapter ring for dismantling protection and shadow gap formation
Switching voltage	max. 30 V	- separate auxiliary power supply needed
Momentary-contact current	10 mA	- with disassembly suction tool
Surface adjustment	20 mm	- NO contact
Dimensions (W x H x D)	86 x 160 x 5 mm	- with screw terminals
		- KNX applications:
		- for parameterisable functions, see universal interface, 2gang, flush-mounted
		- operation with non-choked output of KNX voltage supply possible (pay attention to current consumption)

Suitable for	Order no.	Page
Wall box 2gang	1870	31
Power supply 24 V DC RMD	TGA200	101

Design	Order no.	PU
glass clear, mirrored	<b>1685 78</b>	1

## Supplementary products

### System interfaces



### Universal interface 8gang flush-mounted

Operating voltage over bus	21 ... 32 V=	- for switch, push-button, dimmer and shutter functions
Input scanning voltage	per channel 20 V	- 8 binary inputs, 8 outputs or 4 binary inputs and 4 outputs parameterisable
Output current per channel	max. 0.8 mA	- with 8 independent binary inputs for potential-free contacts
Operating temperature	-5 ... +45 °C	- outputs for LEDs, e.g. as status LED
Line length	10 m	- extension unit for light scene push-button
Line length	max. 10 m	- with programming button and red programming LED
Dimensions (W x H x D)	44 x 48 x 32 mm	- single and two push-button operation parameterisable
		- one push-button operation for switching, pushing and dimming
		- shutter operation concept short-long-short and long-short parameterisable
		- second operating level by object or 3-button handle (only 8-input application)
		- bus connection via connecting terminal
		- object for audio/video control
		- objects: switching, forced guidance, feedback of respective output (only for application 4 inputs/4 outputs)
		- cyclic transmission can also be started via switching object
		- dimming / position value transmitter 1 byte
		- short-circuit and overload proof (electronic fuse)
		- protected against polarity reversal
		- with screw terminals

Suitable for	Order no.	Page
Glass sensors		38
Berker TS Crystal		29
Push-button, NO contact	1811 1 ..	28
Adapter for KNX and relay	7590 00 32	39

Design	Order no.	PU
black	<b>7564 80 01</b>	1

**Wall boxes**



**Wall box**

– plastic

Design	Order no.	Page
Wall box	<b>1809</b>	50
Wall box for installation in hollow walls	<b>1824</b>	50

Suitable for	Order no.	Page
Glass cover plate		28
Glass cover plate with facet		28



**Wall box 2gang**

Dimensions (W x H x D)

68 x 139 x 75 mm

– flush wall-mounting or with adapter ring

Cut hole Ø

2 x 68 mm

– for flush mounting and hollow-wall mounting

Cut hole pitch

71 mm

Design	Order no.	Page
Wall box 2gang	<b>1870</b>	1

Suitable for	Order no.	Page
Glass sensors		38
Crystal Ball	1685 78	30

**Accessories**



**Two-hole screws 2 x M3.5 x 50 mm**

– brass, refined

– 2 pieces for fixing in deeper seated boxes

Design	Order no.	Page
chrome glossy, brass galvanised	<b>1895 10</b>	1
gold glossy, 24-carat galvanised	<b>1895 12</b>	1
stainless steel matt, brushed nickel	<b>1895 13</b>	1